

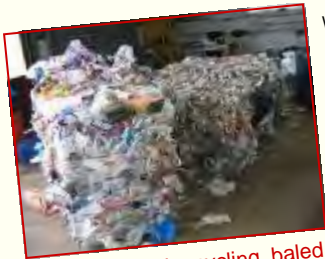


Household Recycling Trial Update

The recycling collection trial, which was set up in February this year, in Barvas, Brue and Tarbert is being used to determine whether a household uplift service for mixed recyclable materials and glass is viable in rural areas of the Western Isles. Due to the success of the initial trial, it is being extended to a number of other areas. This means that the residents of Ballantrushal, Upper & Lower Barvas and Airidhantuim in Lewis and Glenkyles, Kintulavig, Leverburgh, Strond and Borrisdale in Harris will be given 2 new bins for recycling at their doorstep. One bin will be for dry recyclates, such as plastic, paper, cans and the other bin for glass. The dry recyclates are baled and sent to the mainland for recycling and the glass is taken to the Creed Recycling Facility and processed into Siar Glass.



Calum Morrison with Iain & Sharon from Waste Aware



Tarbert mixed recycling, baled, waiting to go to mainland

We hope the residents of the new areas will find the service useful and will participate fully in the trial. Good quality materials collected for recycling result in good quality recycling and we have been able to recycle 98% of all co-mingled materials collected so far. The Waste Aware Team will be regular visitors to the areas, carrying out household surveys and bin audits during the trial period. If you have any questions about recycling please ask one of the Team. If you would like a follow up visit this can be arranged by phoning **709900**.

(Depending on the results of the trial, the service will gradually be extended out to many other areas throughout Lewis and Harris during 2011)

This year Comhairle nan Eilean Siar has collected 1063 tonnes of recycled materials and 3258 tonnes of organic material. All this waste has been diverted from landfill, which in turn, has saved the residents of the Western Isles money, that otherwise would have gone to Revenue & Customs as Landfill Tax. We would like to say a big **THANK YOU** to everyone for taking part with the recycling and organic collections. Next year, we need more people to come on board and help protect public services.



Household Waste Recycling Centres (HWRC)

Comhairle nan Eilean Siar operate three **HWRC's throughout the Western Isles.** Based at Habost in Ness, Urgha in Harris and at Creed Park, Lochs Road. The Habost and Urgha sites are community managed. These sites are for the disposal of household waste and recycling.

Habost Amenity Site



Sun/ Mon/ Wed	— Closed	
Tues/Thurs/Fri	10.00am-12.00pm	2.00pm-4.00pm
Sat	9.00am-12.00pm	1.00pm-4.00pm

Situated centrally all three sites are manned, so there will always be someone there to help you dispose of your items. Since the sites have opened they have proved very popular with users who find them more convenient than community skips.

Creed Park Household Recycling Centre



Open Mon – Sat 10.00am—4.00pm



At the sites there are skips for various types of materials such as Wood/ Timber, Metals, General Waste, Green Waste. Other skips for waste types for recycling may be added as need is identified. You can also take your fridges/freezers/cookers/ washing machines/ tumble dryers/ **TV's/computers/monitors & any small electrical items.** These are all sent to the mainland for recycling.

Urgha Depot



Open Mon-Thurs 8.00am– 4.00pm. Fri Closed. Sat 9.00am-12.00pm

Comhairle nan Eilean Siar are currently developing an additional two household waste recycling centres. One of these sites is at Reuval, Benbecula and the other is at Garrygall in Barra. It is hoped that these sites will be open for public use early in the New Year. Both sites will have individual skips for recycling and waste separation.



Remember to take your real Christmas tree to one of our household waste recycling centres—save space in your organic bin for food preparation scraps and all that leftover food!



Monitor mountain at Creed Park waiting to go to mainland for recycling

Facelift for recycling banks & community skips



After many years in service and exposure to our weather conditions, **the Comhairle's refurbishment** of recycling banks and community skips continues. This should make your next visit to your local bank or skip easier on the eye!



Cutting down on Christmas Waste



Christmas! A time of goodwill and celebration, often accompanied by seasonal increases in eating, drinking and spending. If all goes well this combination should result in a lot of fun, but it will also result in an estimated 3 million tonnes of waste.



Make a **REAL** difference this festive season. Please remember to recycle all your plastic bottles, glass bottles, jars and cans by using your kerbside bin, co-mingled bins or local recycling bank and limit the impact you have on the environment this Christmas. Remember the 3 R's!



Please remember that we still need your organic waste to feed the digester! Make good use of your organic bin, put all your food preparation scraps and leftovers in it. Correct separation is vital. The digester produces around 1500 tonnes of compost each year, which the Comhairle uses instead of more valuable topsoil in landfill restoration and other projects.

The anaerobic digester at Creed Park is fully operational, producing a significant amount of electricity each year. From July 2009 to June 2010, it produced nearly 400,000 kilowatt hours of electricity. This is enough electricity to run a standard 1-bar heater for over 45 years or light 100 x 15W low energy bulbs for over 30 years!

REDUCE

SEND E-CARDS

AVOID OVER PACKAGED GOODS

HIRE PARTY ACCESSORIES

COMPOST YOUR GREEN WASTE

BUY GIFT VOUCHERS

REUSE

BUY A LIVING TREE

BUY RECYCLED

REUSE PLASTIC BAGS

REUSE WRAPPING DECORATIONS

USE RECHARGEABLE BATTERIES

RECYCLE

RECYCLE CHRISTMAS CARDS—PUT IN YOUR NEAREST RECYCLING PAPER BANK, KERBSIDE/ CO-MINGLED OR YOUR ORGANIC BIN

RECYCLE CHRISTMAS TREES—AT CREED PARK RECYCLING CENTRE OR CHOP IT UP TO FIT IN YOUR ORGANIC BIN

RECYCLING CANS AND GLASS BOTTLES & JARS—IN YOUR NEAREST RECYCLE BANK OR PUT IN KERBSIDE/ CO-MINGLED BINS

RECYCLE PACKAGING—IN YOUR NEAREST RECYCLE BANK OR PUT IN KERBSIDE/ CO-MINGLED BIN



Comhairle nan Eilean Siar

are proud to support the Love Food Hate Waste Campaign.

We're all guilty of throwing food away, and by raising awareness through the campaign, we can reduce the amount of food waste produced. Waste Aware Western Isles will be participating in a road show run by the Love Food Hate Waste Team in the New Year. The date will be posted on our website and in the local press, pop along to see them and get some handy hints, tips, tasty recipe ideas and advice on how you can **save up to £420 a year** by managing your food better.

Battery Recycling

What do you do with the old batteries? If you do not use rechargeable batteries, you can now take your old ones to a number of premises throughout the islands for recycling.

If a business sells more than 32kg per year of batteries, that business has an obligation to assist in the collection and recovery of them.



22,000 tonnes of household batteries end up in landfill



Iain Campbell, Waste Aware & Co-Op employee Carron at recycling point.

each year—that roughly equates to the weight of 3143 elephants! We need to reduce that figure by encouraging households to recycle batteries and this is now a lot easier to do. The full list of premises which are running the take back scheme is on our website www.cne-siar.gov.uk/recycling



What happens to your recycling?

Plastics **Paper** **Cans** **Glass** **Co-mingled**



Plastics collected from kerbside collection and recycling banks waiting to be baled at Creed Park



Paper collected from kerbside collection, recycling banks & community collections stored at Creed Park to be sent to mainland



Cans collected from kerbside collection and recycling banks waiting to be baled at Creed Park



Glass bottles & jars collected from kerbside collection and recycling banks to be crushed at Creed Park



Mixed recycling from Barvas, Brue & Tarbert waiting to go through baler



Plastics Crusher & Baler



Paper being loaded onto bulker



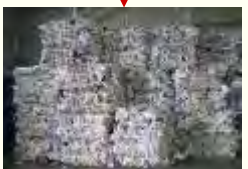
Can Crusher & Baler



Glass Crusher



Baled material sent to mainland



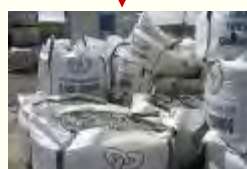
Baled plastic is sent to the mainland, where it is melted and made into new products e.g. new bottles and fleece jackets.



Example of paper mill, where our paper gets recycled into new paper and products



Baled cans waiting dispatch to mainland for recycling into bicycles, satellite dishes.



Decorative SiarGlass waiting delivery to customers throughout the islands.



Quality maintained by picking stations at the mixed recycling facility



Iain & Kirstin

And Finally.....

2010 has been an exciting time for the Waste Aware team, especially for both Iain and Sharon. Iain married Kirstin in February at Dunfermline Abbey and Sharon married Peter at the Newton Hotel, Nairn in October. Congratulations and best wishes to both couples.



Sharon & Peter

Creed Integrated Waste Management Facility, Creed Enterprise Park
Lochs Road, Isle of Lewis HS2 9JB Helpline 01851 709900

We're on the web!
www.cne-siar.gov.uk/recycling