



SOCIO ECONOMIC UPDATE

Ag Obair Comhla Airson nan Eilean Siar – Working Together for the Western Isles No.17 (04/11)

Population and Migration

New Name for Merged Organisations

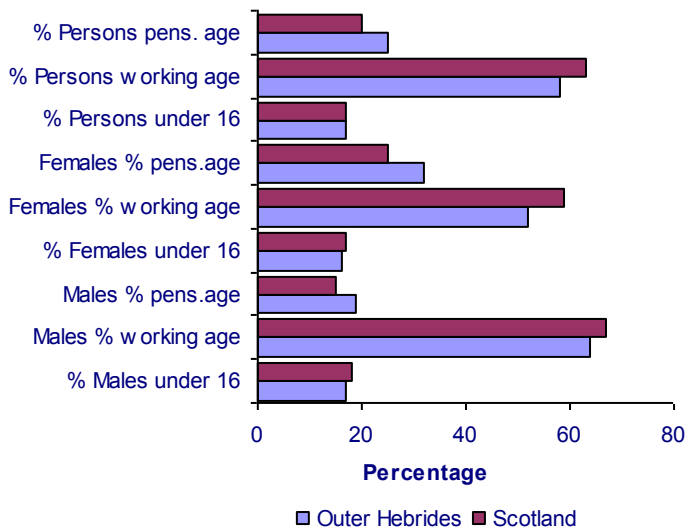
As from the 1 April 2011, the General Register Office for Scotland (GROS) merged with the National Archives of Scotland (NAS) to become the National Records of Scotland (NRS). The GROS website will remain active until it is replaced in due course by a new website for NRS.

Population Estimates

On 26th April 2011 [National Records of Scotland](#) (NRS) released the mid 2010 population estimates for Scotland and its administrative areas. Mid year estimates are produced annually and relate to the 30th of June of the year covered.

The population of the Outer Hebrides is estimated to have had a slight increase in population of 10 persons. Between 2000 and 2010 the Outer Hebrides had the fourth highest decrease in population (-2.2%) , after Inverclyde (-5.8%), East Dunbartonshire (-3.7%) and West Dunbartonshire (-3.6%). The median age (age at which half the population is older and half younger) in the Outer Hebrides was 46 (Scotland average 41).

**Age and Sex Structure
Outer Hebrides and Scotland 2010**

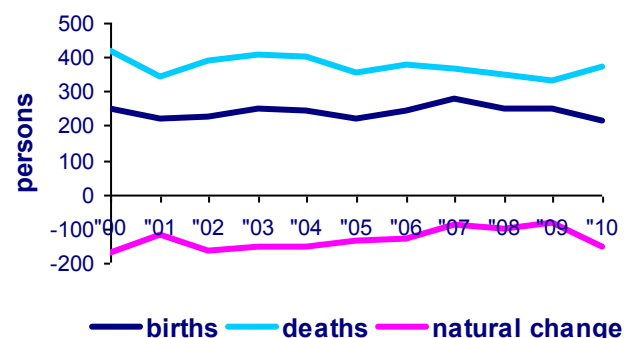


As illustrated in the adjacent graph the Outer Hebrides continues to show a skewed age and sex structure in comparison to Scotland.

The percentage of males of pensionable age is greater at 19% (Scottish avg 15%). Females of pensionable age is greater still at 32% (Scottish avg 25%). In contrast females of working age is lower at 52% (Scottish avg. 59%). Males of working age is 64% (Scottish avg. 67%). There is only a slight difference in the percentage of males under 16 at 17% (Scottish avg. 18%) and females under 16 at 16% (Scottish avg 17%).

Overall the percentage of people of working age is 5% lower than the Scottish average and the percentage of people of pensionable age is 5% higher than the Scottish average.

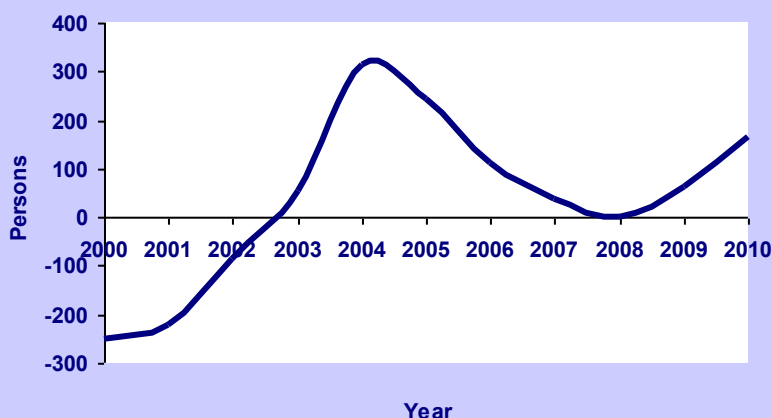
**Natural Change 2000-2010
Outer Hebrides**



Natural change (the difference between number of births and deaths in a year) has seen a great change in 2010 in comparison to previous years. There was a much larger negative natural change (-155). This is the biggest increase since 2004. The largest negative natural change over the decade was in 2000 at -168.

2010 saw deaths (372) continue to exceed births (217) resulting in the negative natural change. However, as this year's net migration was higher than in previous years this helped to counteract the effect of negative natural change.

Net migration 2000 to 2010 Outer Hebrides



As mentioned on the previous page the high net migration in 2010 (165) in comparison to 61 in 2009 has helped to counteract the effect of negative natural change. The Outer Hebrides consistently has higher deaths than births and so positive net migration is essential to counteract this.

As the adjacent graph indicates there have been high fluctuations in the migration trend in the Outer Hebrides over the decade. Net migration has fluctuated from -252 in 2000 to a high of 315 in 2004.

Migration

Two recent studies were released by the Scottish Government in February 2011 looking at migration:

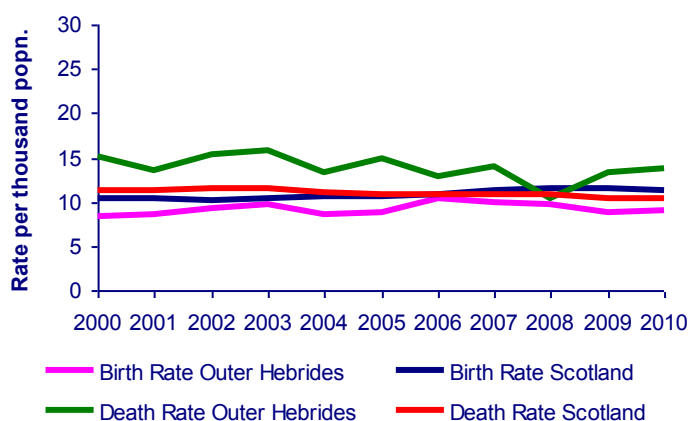
Characteristics and Intentions to and Emigrants from Scotland - Review of Existing Evidence [Link](#)

The Demographic and Socio-Economic Profile of Return Migrants and Long-Term In-Migrants in Scotland: Evidence from the Scottish Longitudinal Study [Link](#)

Births, Marriages and Deaths Preliminary Annual Figures 2010

Preliminary figures released by [NRS](#) show that the Outer Hebrides had the third lowest birth rate 9.0 (rate per 1,000 population) of all the Local Authorities in Scotland, the Scottish average being 11.3. The Outer Hebrides had the highest death rate (13.7) in comparison to the Scottish average of 10.4.

Birth and Death Rates Outer Hebrides and Scotland 2000-2010



The adjacent table shows the birth and death rates for the Outer Hebrides and Scotland over a decade, showing that they differ greatly. The Outer Hebrides rate is more variable but consistently has a higher death rate and lower birth rate than the Scottish average which remains fairly constant. The highest birth rate in the Outer Hebrides was in 2006 at 10.4 and the lowest rate in 2000 at 8.4. The highest death rate was in 2003 at 15.7 and the lowest in 2008 at 10.4.

Unusually, the 4th quarter release for 2010 shows a marked change. The Outer Hebrides had the 7th lowest birth rate at 9.7 (Scottish avg. 11.1) and the 11th lowest death rate at 11.5 (Scottish avg. 10.7).

Babies First Names 2010

NRS have released statistics on the most popular names in 2010. In the Outer Hebrides the most popular boy's name was James. The most popular girl's name was Emma. In Scotland the most popular boy's and girl's names remain the same with Jack and Sophie.

Local Government and Scottish Parliament Electors on Electoral Register

Figures released in February 2011 show that total electorate numbers in the Outer Hebrides have increased by 2.9% (622) from 21,366 in 2003 to 21,988 in 2010.

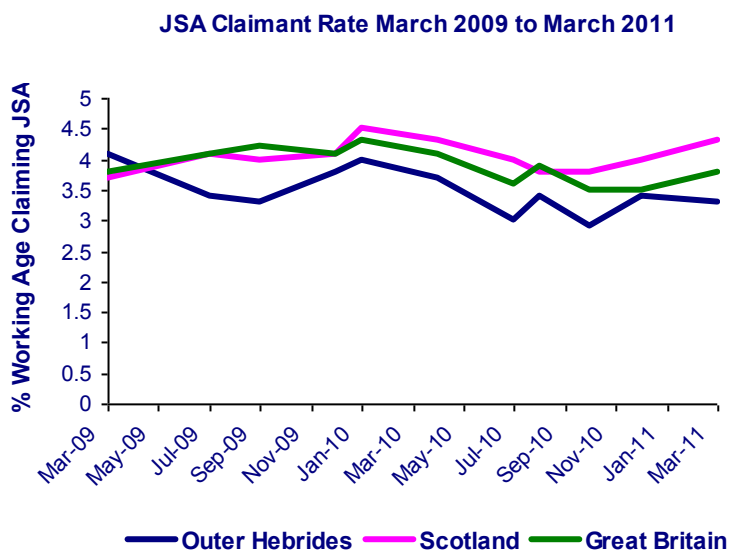
Labour Market

The latest release from [NOMIS](#) (Office for National Statistics) gives the following JSA claimant rates for March 2011:

| | |
|-----------------------|-------------|
| Outer Hebrides | 3.3% |
| Scotland | 4.3% |
| Great Britain | 3.8% |

As shown in the adjacent graph the Outer Hebrides has had a lower JSA claimant rate than Scotland and Great Britain since May 2009. It reached its highest level in March 2009 at 4.1 and its lowest level in September 2010 at 2.7.

However, the percentage of people economically active has decreased from 81.4% in 2008/09 to 70.9% in 2010/11.



Built Environment

Scottish House Condition Survey

Local Authority analysis from the [Scottish House Condition Survey](#) is now available from 2007 - 2009. There are a number of tables available giving various information e.g. profile of stock and households, tenure and mobility, dis-repair and repair, energy efficiency and fuel poverty. Some findings for the Outer Hebrides:

- Highest % of fuel poor households at 58% (Scottish average 28%)
- Lowest median annual household income in private tenure £15,400
- Highest % of houses (30%) banded 0-2 in National Home Energy Rating (NHER)
- Highest % of **extreme** fuel poor households at 31% (Scottish average 8%)
- Highest % (86%) of fuel poor pensioners, national average 50%
- Highest % (79%) of private housing failing Scottish Housing Quality Standards

Homes Fit for the 21st Century

[Link](#)

Housing Statistics for Scotland

[Link](#)

SCORE Mid Year Report

[Link](#)

Operation of Homeless Persons Legislation

[Link](#)

Evaluation of LIFT

[Link](#)

Scotland's Housing Expo

[Link](#)

Crime Law and Justice

Police Officer Quarterly Strength Statistics

[Link](#)

Racist Incidents Recorded by Police

[Link](#)

Domestic Abuse Incidents Recorded by Police

[Link](#)

Scottish Crime and Justice Survey

[Link](#)

Agriculture Fisheries & Forestry

Salmon Exports Leap to New Record

[Link](#)

Statement of Public Participation

[Link](#)

New Seal Legislation

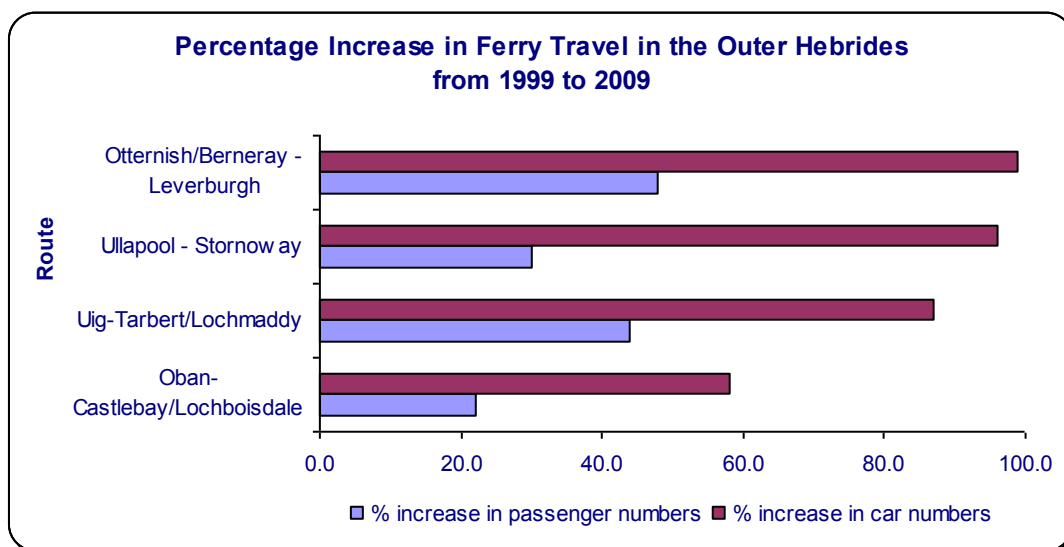
[Link](#)

Focused Funding for Crofters

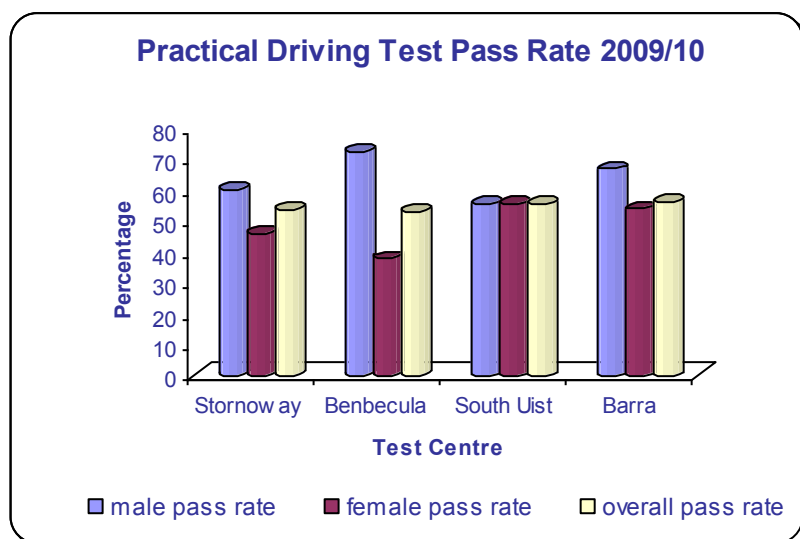
[Link](#)

Transport Travel & Tourism

The latest [Transport Statistics](#) released show that passenger numbers at Stornoway airport increased by 39% from 1999 to 2009. Passenger numbers at Barra airport have increased by 43% while passenger numbers at Benbecula airport remain the same.



The graph above shows the increase in passenger and car numbers on all ferry routes in the Outer Hebrides. The largest increase in passenger numbers (48%) and car numbers (99%) was on the Otternish/Berneray-Leverburgh route. However, all routes show a larger increase than in the previous decade 1998 to 2008. The smallest increase in passenger numbers (22%) and car numbers (58%) was on the Oban-Castlebay/Lochboisdale route.



The Transport Statistics also show the practical driving test pass rate in 2009/10 for driving test centres in the Outer Hebrides.

As the adjacent graph shows the highest overall pass rate was in Barra at 56.3%. The male pass rate was highest in Benbecula and the female pass rate was highest in South Uist.

Education and Training

The [Destination of Leavers of Scottish Schools 2009/10](#) publication was released in December 2010 by the Scottish Government. This publication highlighted the number of positive destinations of school leavers which has increased in the Outer Hebrides from 88.3% in 2008/09 to 94.3% in 2009/10. Positive destinations in the Outer Hebrides have been higher than the Scottish average from 2007/08 to 2009/10.

Summary Statistics for Schools in Scotland
Final Reports for Excellence Groups C for E

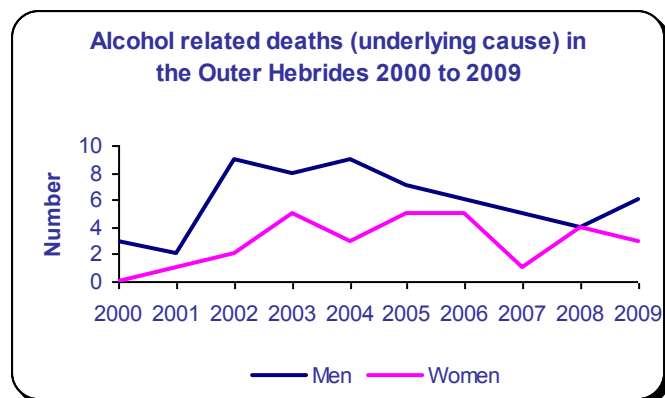
[Link](#)
[Link](#)

Teaching Scotland's Future - Review
Gov't's Reponse to Teaching Scotland's Future

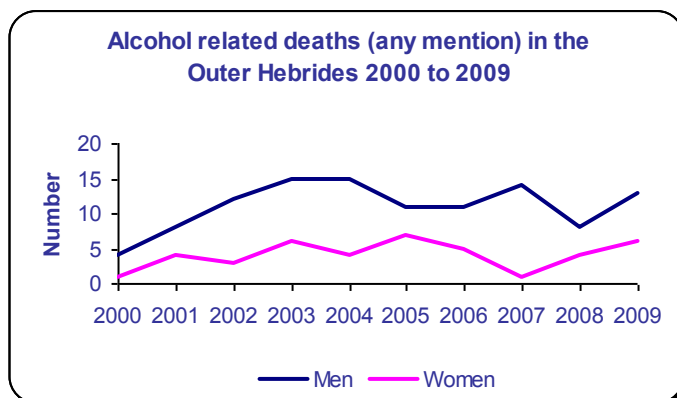
[Link](#)
[Link](#)

Health Care & Welfare

The [Alcohol Statistics Scotland 2011](#) report published in February 2011 revealed that Scots continue to out-drink their English and Welsh neighbours. The alcohol market was worth £3.64 billion in 2009 with off-sales or drinking at home becoming increasingly popular. In the Outer Hebrides in 2009/10 there were 285 total discharges with an alcohol related diagnosis with 92% of these being emergency admissions. The highest number of admissions were made on Sunday.



As shown in the graph above the number of alcohol related deaths (underlying cause) has fluctuated over the years but male deaths are consistently higher than female deaths. The age standardised death rate per 100,000 population for men in 2009 was 38.5, the second highest rate in Scottish Health Board areas, the Scottish average was 30. The rate for women (12.2) was lower than the Scottish average (14.4).



As shown in the graph above the number of alcohol related deaths (any mention) has fluctuated over the years but again male deaths are consistently higher than female deaths. The age standardised death rate per 100,000 population for men in 2009 (72.7) was much higher than the Scottish average (52.4), the second highest rate in Scottish Health Board areas. The rate for women (36.2) was the highest rate in Scottish Health Board areas, Scottish average of 20.5.

Childhood BMI Statistics

[Link](#)

ISD Statistics

[Link](#)

2010 CHP Profiles

[Link](#)

Smoking "causes damage in minutes"

[Link](#)

Link between heart disease and miscarriage

[Link](#)

Drug Related Deaths

[Link](#)

Results for UK from Global Alcohol Report

[Link](#)

Infant Mortality and Morbidity Report 2009

[Link](#)

Economy

"Scotland continues to score highly, placed as it is in the top 20 nations and it is scored and ranked similarly and often ahead of the other smaller, high income liberal democracies on the index: New Zealand, Denmark, Finland and Ireland." - one of the summary findings in the [The Anholt GFK-Roper's Nation Brands Index: Summary Report for Scotland 2010](#) published in December 2010.

Scottish Export Statistics

[Link](#)

New Scottish Loan Fund

[Link](#)

Business Enterprise Research & Development

[Link](#)

Pay Packets Vary by 46% across Scotland

[Link](#)

Scottish Export Statistics

[Link](#)

Budget Bill Passed

[Link](#)

GDP for 4th quarter 2010

[Link](#)

Local Government Financial Statistics 2009-10

[Link](#)

Scottish National Accounts Table

[Link](#)

Implications of Changing Local Govt Budgets

[Link](#)

Contact

If you have any queries or suggestions regarding this bulletin or would like to unsubscribe, please contact:

Kathleen Shirkie

Research Officer – Development Department

Comhairle nan Eilean Siar - Sandwick Road, Stornoway - Isle of Lewis, HS1 2BW

kshirkie@cne-siar.gov.uk

