



SOCIO ECONOMIC UPDATE

This is the fifth edition of the Socio Economic Update; a regular e-bulletin which has been designed to keep you up-to-date with recently released socio-economic reports of reference to policy and planning in the Western Isles. This update has a new format, with info listed under topic headings.

Population and Migration

Scotland's Population, 2005 Register Generals Annual Review of Demographic Trends

This is an annual report by the Register General highlighting the trends and issues affecting Scotland's population. This year, the special subject is 'cause of death'.

Key findings for the Western Isles in 2005 include:

- In 2005 there were: 233 live births (8.8 per 1,000 popn); 391 deaths (14.8 per 1,000 popn) and 102 marriages;
- Of the 233 live births: 164 were to married parents and 69 were to unmarried parents (49 of which had the same address, 14 different address and 6 were sole registrations); thus 29% of all births were to unmarried parents (national average 47%);
- Over the last decade (1995-2005) there was a 8.5% decline in population of the Western Isles (the highest in Scotland) with a 'natural change' of -5.0 per year per 1,000 population and a 'migration (and other) change' of -3.4 per year per 1,000 of the population;
- Cancer now accounts for the greatest number of deaths in Scotland, with lung cancer the most common cause. For men, the annual death rate rose sharply to a peak in the 1970s before falling ever since. For women, by contrast, the rate was lower and increased gradually until the mid-1990s.

[Full Report](#)

Vital Statistics – 1st Quarterly Return 2006

The Registrar General's has released provisional figures for vital events registered during the period 1 Jan to 31 Mar 2006: Over the period, the Western Isles saw: 59 births (rate 9.1); 96 deaths (rate 14.8), and; 8 marriages.

[Full Report](#)

Outer Hebrides Migration Study

The Outer Hebrides Migration Study is nearing completion and it is anticipated that the final report will be completed in the following months. A summary of findings and link to the full report will be provided in a future Socio Economic Update.

For More Info email [Isla Macdonald](mailto:Isla.Macdonald)

Scottish Household Survey 2005 Annual Report

In August 2006, the 7th annual & technical reports of the SHS were released. The survey provides up-to-date info on the characteristics, composition and behaviour of households in Scotland, in particular housing, transport and social justice.

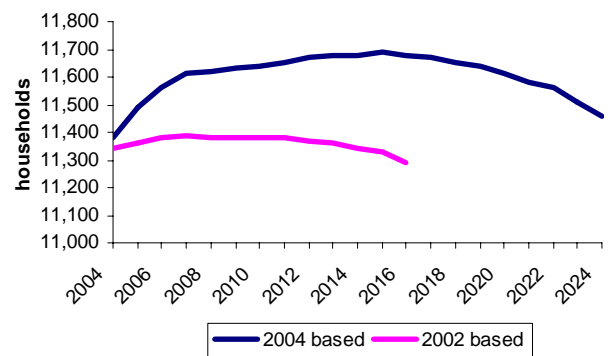
[Full Report](#)

Household Projections for Scotland, 2004 based Results for the Western Isles

In May, the General Register Office for Scotland published forward projections for households in Scotland up to 2024; based on the estimated population of Scotland in mid-2004:

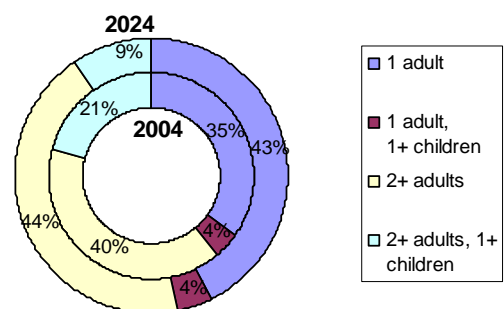
It is estimated that there will be a 1% increase in the number of households in the Western Isles from 11,380 in 2004 to 11,460 in 2024 (peaking at 11,690 in 2015). Graph 1 below plots these new 2004-based projections against the previous 2002-based;

Graph 1: Household Projections - W. Isles
2004 based v 2002 based



The average household size in the Isles is projected to decrease from 2.28 in 2004 to 1.92 in 2024;

Graph 2 : Household Type - W. Isles
2004 (inner) and 2024 (outer)



It is estimated that there will be: 24% increase in 'one adult' households, 9% increase in 'two or more adult' households, negligible change in 'one adult plus children' and a 54% decrease in 'two adults or more plus children', see graph 2.

[Full Report](#)

Labour Market

Unemployment Update

The latest release from NOMIS gives the following unemployment rates for July 2006:

Western Isles: 2.9% Scotland: 2.9% UK: 2.6%

This is the first time in the last ten years that the unemployment rate in the Western Isles has caught up with the Scottish average.

Over the last 10 years, we can see that the unemployment rate in the islands has fallen from a high of 9.3% in July 1996 to a low of 2.7% in Oct 2005.

[Full Report](#)

Agricultural, Fisheries and Forestry

Scottish Agricultural Census Summary Sheets

Agricultural and horticultural main census items by groupings of local authority areas for June 2005.

Key findings for the Western Isles include:

- 239,733 sheep; 7,439 cattle; 7,131 poultry; 301 horses; 143 pigs; 64 goats;
- 4040 part-time and 362 full time agricultural workers (or 'crofters');
- 290 units of common grazing (214,329 hectares);
- 2910 ha in tillage; 800 ha in woodland etc.

[Link](#)

Scottish Fisheries Statistics 2004

[Link](#)

Scottish Agricultural Facts & Figures

[Link](#)

Health and Care

Recent Reports:

Scottish Local Authority Compendium of Statistics Information at Western Isles NHS level for:

1. Accidents in children - newly published data
2. Acute hospital care - newly published data
3. Cancer registrations - newly published data
4. General Practitioners - newly published data
5. Fertility
6. Mortality
7. Delayed discharges
8. Population
9. Care homes
10. Teenage pregnancies

[Link](#)

Care Homes, 2005

[Link](#)

Day Care Services, 2005

[Link](#)

Free Personal and Nursing Care

[Link](#)

Home Care Services, 2005

[Link](#)

Quarterly Waiting Times 2002-2006

[Link](#)

Annual Trends in Bed Availability

[Link](#)

NHS Scotland Workforce Statistics

[Link](#)

Scottish Public Health Observatory

[Link](#)

Education and Training

Gaelic Education in Scotland

The number of primary school pupils in Gaelic medium education in 2005/06 was 2,048, with a further 160 being taught Gaelic through the medium of Gaelic. In secondary there were 433 pupils receiving Gaelic medium education, with a further 1,292 being taught Gaelic through the medium of Gaelic.

The number of school entries in 2004/05 for Higher grade Gaelic (learners) was 103; the same as last year. The number of school entries in 2004/05 for Higher grade 'Gaidhlig' was 102, slightly higher than the last 2 years.

Scottish Executive Education Statistics

[Link](#)

Economy

Key Economic Links:

2005 Scottish Economic Statistics

[Link](#)

Western Isles Tourism Fact Sheet

[Link](#)

Scottish Quarterly GDP 2005, Q4

[Link](#)

Scottish Quarterly GDP 2006, Q1

[Link](#)

Scottish Manufactured Exports 2006 Q1

[Link](#)

2003 Western Isles Regional Accounts

[Link](#)

Scottish Local Govt Finance Statistics

[Link](#)

Comhairle nan Eilean Siar Annual Report

[Link](#)

Rural Scotland Price Survey

[Link](#)

Social and Welfare

Scottish Neighbourhood Statistics

The July 2006 update of the SNS website includes:

- combined counts of worklessness and illness related benefits;
- revised data for individual benefits and update to the child benefit / new deal data;
- ANPS estimates of highest qualification; pupil numbers, attendance and school attainment at data zone level;
- further and higher education indicators;
- number and proportion of adults with learning disabilities receiving services and taking part in activities; and,
- number and proportion of dwellings by council band for 2005.

[Link](#)

Staff of Scottish LA's Social Work Services, 2005

[Link](#)

'The Same as You?' Scotland, 2004

[Link](#)

The Future Care of Older People Report

[Link](#)

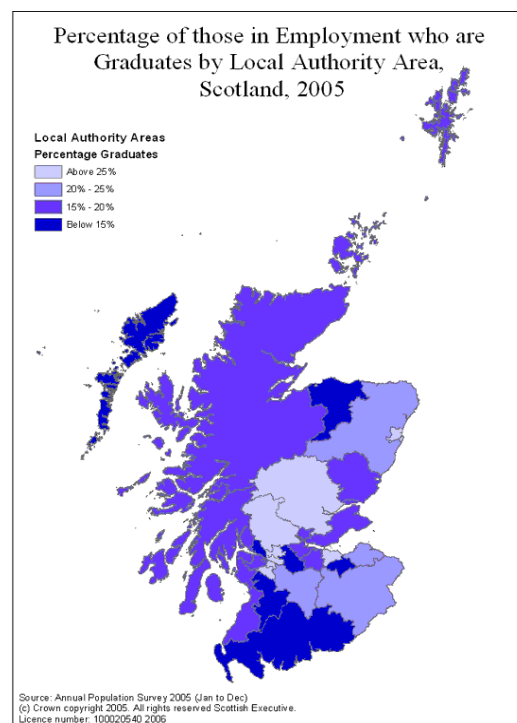
Special Report: Annual Population Survey 2005

This summary publication was released in June 2006 and presents analysis on the labour market, education and training at Scottish and sub-Scottish levels.

Examples of findings for the Western Isles includes:

Indicator	W. Isles	Scotland
Working age employment rate, 2005	80.4%	74.9%
Working age employment rates for people aged over 50, 2005	76.3%	69.1%
Economic inactivity rates for working age males, 2005	15.5%	17.2%
Economic inactivity rates for working age females, 2005	16.8%	24.5%
Graduates as a proportion of those in employment, aged 25-59/64, 2005	14.5%	22.5%
Proportion and level of working age people EET (in employment, education or training), 2005	85.9%	79.7%

NB: Please use these figures with caution, survey results have an acknowledged unreliability in application to smaller populations [Link](#)



Natural Environment

Key Scottish Environmental Statistics, 2006 [Link](#)

High level summary statistics on: *Global Atmosphere; Air Quality; Water; Marine; Land; Waste; Biodiversity.*

Scottish Environmental Statistics Online

Contains information under the following categories:

*Climate Change and the Ozone Layer;
Air Quality; Noise Pollution;
Inland Water Quality and Use;
Coastal and Marine Waters;
Waste and Recycling; Public Attitudes;
Radioactivity; Land;
Conservation; Biodiversity.*

[Link](#)

Built Environment

Housing Trends in Scotland, Q1 2006 [Link](#)

- Number of dwellings on the council tax register as at 06/09/05 in the Western Isles was: 13,676
- Estimated number of recipients of housing benefit in the Western Isles was: 1,300;
- Local Authority dwellings:
 - near actual estimate in Sept 05: 1,826
 - average weekly standard rent 2005/06: £42.

Scottish Vacant & Derelict Land Survey 2005 [Link](#)

LA Housing Income & Expenditure 2003/06 [Link](#)

Homeless Persons Legislation in Scotland (Nat. & Local Authority Analyses) 2004-05 [Link](#)

Crime and Justice

Criminal Justice Social Work Stats 2004/05

Findings for the Western Isles in 2004/05 include:

- 97 social enquiry reports (54.1 per 1,000 popn);
- 32 community service orders (17.8 per 1,000 – the highest rate in 5 years);
- 27 probation orders (15 per 1,000 popn). [Link](#)

Transport, Travel and Tourism

Main Transport Trends, 2006 [Link](#)

Key 2005 Road Accidents Statistics [Link](#)

Bus and Coach Statistics 2004-05 [Link](#)

Scottish Household Survey Travel Diary 04 [Link](#)

Contact

If you have any queries or suggestions regarding this bulletin or would like to unsubscribe, please contact:

Isla Macdonald
Research Officer
Sustainable Communities
Comhairle nan Eilean Siar
Sandwick Road
Stornoway
Isle of Lewis
HS1 2BW

isla.macdonald@cne-siar.gov.uk

This e-bulletin is also available (along with past issues) on the Comhairle's intranet in the 'Fact File'.