

COMHAIRLE NAN EILEAN SIAR

Education and Children's Services Department

Sandwick Road, Stornoway HS1 2BW
Rathad Shanndabhaig, Steornabhagh HS1 2BW

Education Provision PROPOSAL DOCUMENT – AUGUST 2011

Proposal for the Review of the Common Boundary of the Catchment Areas for Stornoway and Laxdale Primary Schools Isle of Lewis

Roinn an Fhoghlaim is Seirbheisean Chloinne

COMHAIRLE NAN EILEAN SIAR
Education and Children's Services Department

Review of Education Provision – August 2011

**PROPOSAL DOCUMENT FOR THE REVIEW OF THE COMMON BOUNDARY OF THE CATCHMENT
AREAS FOR STORNOWAY AND LAXDALE PRIMARY SCHOOLS
ISLE OF LEWIS**

Index

Section

	Proposal
1	Introduction
2	Consultative Process – Summary of Process for this Proposal Document
3	Public Meetings
4	General Background to the need for a review
5	Key Factors <ul style="list-style-type: none"> • Demographic Trends and School Rolls • Travel
6	Consultation Proposal
7	Educational Benefits Statement
8	Conclusion
Appendix 1	Map
Appendix 2	Consultees

Review of Education Provision: August 2011

THE COMMON BOUNDARY OF THE CATCHMENT AREAS FOR STORNOWAY AND LAXDALE PRIMARY SCHOOLS

Report by the Director of Education and Children's Services

PROPOSAL

It is proposed that the catchment areas for Laxdale and Stornoway Primary Schools be defined by using the HS1 postcode line as detailed on the map which forms Appendix 1 to the Report with effect from August 2012

INTRODUCTION

- 1.1 At its meeting on 29 April 2010, the Comhairle, as part of the review of Educational Provision and the Comhairle's Future Strategy for the Schools Estate, agreed to approve the holding of Community Conversations with all stakeholders on the review of the catchment areas for Laxdale Primary and Stornoway Primary Schools.
- 1.2 While there is no legal requirement for a school to have a defined catchment area, local authorities use the definition as an administrative tool so that children living within a catchment area are normally provided with a place at the school serving that area.
- 1.3 Prior to Manor Farm becoming the subject of major housing development in the late 1970s, this area of farmland divided Laxdale from the Manor Park area of Stornoway and thus gave clear physical expression to the catchment boundaries for Laxdale Primary School and Stornoway Primary School. When these developments took place, the School catchment boundary in the Stewart Drive/Cearns area was never properly defined. This Report proposes to formally consult on creating such a definition.
- 1.4 The Comhairle, at its Meeting on 31 May 2011, authorised the Director of Education and Children's Services to proceed to undertake the necessary statutory consultation with parents, staff, pupils and other interested parties affected by the proposal that the catchment areas for Laxdale and Stornoway Primary Schools be defined by using the HS1 postcode line as detailed on the map which forms Appendix 1 to the Report as required by the Schools (Consultation) (Scotland) Act 2010.
- 1.5 This document relates to a proposal that the catchment areas for Laxdale and Stornoway Primary Schools be defined by using the HS1 postcode line as detailed on the map which forms Appendix 1 to this document with effect from August 2012.

CONSULTATIVE PROCESS - SUMMARY OF PROCESS FOR THIS PROPOSAL DOCUMENT

Consideration by the Education and Children's Services Committee

- 2.1 This Proposal Document has been issued as a result of a decision approved by the Comhairle. This is to seek views on the proposal in this paper.

Proposal Document issued to consultees and published on Comhairle Web-site

- 2.2 A copy of this document will be issued free of charge to the consultees listed at Appendix 2. It will also be published on the Comhairle website: www.cne-siar.gov.uk

Publication of advertisement in local newspapers

- 2.3 An advertisement will be placed in the Stornoway Gazette and the West Highland Free Press. In addition, there will be announcements related to the Consultation process on the local radio station, Isles FM, and Radio nan Gaidheal.

Length of Consultation period

- 2.4 An advertisement will be placed in local newspapers on Thursday, 25 August 2011. The consultation will thereafter run until close of business on Friday, 7 October 2011, which includes a period of 31 school days.

Public meetings

- 2.5 Public meetings will be held on Tuesday, 13 September 2011, the details of which are given in Section 3 of this document.

Involvement of HMIE

- 2.6 When the Proposal Document is published, a copy will also be sent to HMIE by the Comhairle. HMIE will also receive a copy of any relevant written representations that are received by the Comhairle from any person during the consultation period or, if HMIE agree, a summary of them. HMIE will further receive a summary of any oral representation made to the Comhairle at the public meeting that will be held and, as available (and so far as otherwise practicable), a copy of any other relevant documentation. HMIE will then prepare a report on the educational aspects of the proposal not later than 3 November 2011 after the Comhairle has sent them all representations and documents as mentioned above. In preparing their report, HMIE may visit the affected schools and make such reasonable enquiries of such people there, as they consider appropriate, and may make such reasonable enquiries of such other people as they consider appropriate.

Preparation of Consultation Report

- 2.7 The Comhairle will review the proposal having regard to the HMIE Report, written representations that it has received and oral representations made to it by any person at the public meeting. It will then prepare a Consultation Report. This report will be published in electronic and printed formats and will be advertised in local newspapers. It will be available on the Comhairle web-site and from Comhairle Headquarters, as well as at the affected schools, free of charge. Anyone who has made written representations during the consultation period will also be informed about the report. The report will include a record of the total number of written representations made during the consultation period, a summary of the written representations, a summary of the oral representations made at the public meeting, the Authority's response to the HMIE Report as well as any written or oral representations it has received, together with a copy of the HMIE Report and any other relevant information, including details of any alleged inaccuracies and how these have been handled. The Report will also contain a statement explaining how it complied with the requirement to review the proposal in light of the HMIE Report and representations (both written and oral) that it received. The Consultation Report will be published at least 3 weeks prior to the Comhairle making a decision.

Decision

- 2.8 This Consultation Report, together with any other relevant documentation will be considered by the Education and Children's Services Committee, who will make a recommendation. This recommendation will then be subject to the approval of the Comhairle.

Note on Corrections

- 2.10 If any inaccuracy or omission is discovered in this Proposal Document either by the Comhairle or any person, the Comhairle will determine if relevant information has been omitted or, if there has been an inaccuracy. The Comhairle will then take appropriate action which may include the issue of a correction or the reissuing of the Proposal paper or the revision of the timescale for the consultation period if appropriate. In that event, relevant consultees and HMIE will be advised.

PUBLIC MEETING

- 3.1 Public Meetings will be held to discuss the proposal. Anyone wishing to attend one of these public meeting is invited to do so. The meetings will be convened by the Comhairle and will be addressed by representatives of the Education and Children's Services Department and other senior officers of the Comhairle.
- 3.2 The meetings will be an opportunity to:
- hear more about the proposal;
 - ask questions about the proposal;
 - have the views of all stakeholders recorded so that they can be taken into account as part of the proposal process.
- 3.3 Arrangements for the meetings are as follows:
- **Venue: Stornoway Primary School and Laxdale Primary School**
 - **Date: Tuesday, 13 September 2011**
 - **Time: 7.30pm – 9.30pm**
- 3.4 Note will be taken at the meetings of questions and views. These will be published on the Comhairle web-site, and copies will be made available on request. The meetings will also be recorded.
- 3.5 The Comhairle will also take into consideration any written or electronic submissions on the proposal, which may be submitted to schoolconsultations@cne-siar.gov.uk or to the **Chief Executive at the Comhairle Offices, Sandwick Road, Stornoway HS1 2BW, to arrive not later than 5.00pm on Friday, 7 October 2011.**

GENERAL BACKGROUND TO THE NEED FOR A REVIEW

- 4.1 The Comhairle has consulted on the common boundary for the catchment areas of Laxdale Primary School and Stornoway Primary School in December 2004 and again in March 2006. On both occasions the Comhairle agreed to maintain the status quo.
- 4.2 At that time, housing developments at Manor Farm and the continuing private and public sector housing growth in other parts of the Laxdale area had resulted in the Comhairle being confronted with a situation where Laxdale Primary School was reaching its capacity while, at the same time, there was a substantial number of surplus places in Stornoway Primary School.

KEY FACTORS

Demographic Trends and School Rolls

- 5.1 The table below illustrates the trends for the rolls of both schools within the context of the lifetime of the Authority:

Year	Laxdale Primary School Roll	Stornoway Primary School Roll
1975	177	701
1985	207	536
1995	187	407
2005	247	312

- 5.2 in 2005 it was known that the following developments were completed or planned:
- Newvalley (Marybank) – 24 houses completed and two further sites being investigated for a further 25 houses in the area.
 - Blackwater – 14 houses then under construction and 36 more being considered on another two sites in the same area.

- Private Housing – numerous private houses were under construction throughout the area which was thought likely to add a further 20 units within the next three years.

5.3 Now, 6 years later, these proposed developments are complete but, in spite of all the extra house building, it is clear from the table below that the rolls of both schools have stabilised at around 230 for Laxdale and at around 300 for Stornoway Primary.

Year	Laxdale Primary School Roll	Stornoway Primary School Roll
2006	243	311
2007	235	322
2008	224	295
2009	218	296
2010	227	300

5.4 The rolls and occupancy rates for the schools for this session and next are tabled below:

Session 2010/11		
School	Total Roll	% Occupancy
Stornoway Primary	290	70.22%
Laxdale Primary	227	75.66%

Session 2011/12 (as at 24/08/11)		
School	Total Roll	% Occupancy
Stornoway Primary	313	75.79%
Laxdale Primary	228	74.5%

5.5 All parents of Stornoway Primary, Sandwickhill Primary and Laxdale Primary Schools pupils along with the parents of all pre-school children in these areas were invited to attend one of two community conversations which were held on the 3 May and 4 May 2011.

5.6 Parents who attended these meetings were not averse to the Comhairle consulting on defining the catchment area between Laxdale Primary School and Stornoway Primary School. The consultation on the closure of Sandwickhill Primary School had included the fact that, if Sandwickhill were to close, the catchment area of Stornoway Primary School would be extended to include the Sandwickhill Primary School catchment area. This will take place in August 2012.

Travel

5.7 As the area to the north west of Stornoway defined by the HS1 postcode is within one mile of Stornoway primary School, free school transport will not be granted. Recent changes to the Manor Roundabout layout have resulted in a pelican crossing being sited on Macaulay Road near to the hospital entrance which will allow safe crossing for pupils. A manned children's crossing should be established on Perceval Road at the entrance to Columbia Place to ensure safe crossing into the back entrance to Stornoway Primary School.

CONSULTATION PROPOSAL

6.1 It is proposed that the catchment areas for Laxdale and Stornoway Primary Schools be defined by using the HS1 postcode line as detailed on the map which forms Appendix 1 to this document with effect from August 2012.

EDUCATIONAL BENEFITS STATEMENT

Affected Schools

- 7.1 Laxdale School is a two-storey building which was remodelled and refurbished in 1998. The school was assessed as condition 'B' in the 2007 School Estate Review. The roll as at 24 August 2011 is 228 organised in 17 classes.
- 7.2 Stornoway Primary School is a two-storey building. The school was assessed as condition 'C' in the 2007 School Estate Review, but recent refurbishment has resulted in it being reassessed as condition 'B'. The roll as at 24 August 2011 is 313 organised in 17 classes.

Learning environment

- 7.3 Both Stornoway Primary School and Laxdale Primary School provide high quality environments. Both schools have pleasant cafeteria areas with freshly cooked meals on site. Both schools, because of their pupil population, offer flexible opportunities in grouping children for learning and teaching. They are able to deploy staff flexibly to meet the learning needs of pupils. The staffs of both schools offer a wide range of expertise resulting in good opportunities for sharing practice and offering collegiate support.
- **Information and Communication Technology (ICT)**
In both Stornoway Primary School and Laxdale Primary School, pupils have access to an extensive range of ICT resources. Classrooms have interactive whiteboards in use as well as well as a number of PCs supplemented with 'Classroom in a Box' laptop computers.
 - **Additional Support Needs**
Both schools have facilities to cater for the needs of all children, including those with a full range of additional support needs, and staff have had appropriate training.
 - **Gaelic Medium Education**
Both schools have long established Gaelic Medium provision.

Pre-school provision

- 7.4 The town area has a number of pre-school providers and children who enrol at both schools come from these different pre-school establishment. In addition, Stornoway Primary School has pre-school and birth to 3 provision on the campus. Provision of pre-school education at Laxdale School will be the subject of future consultation.

Accessibility of Premises

- 7.5 Laxdale Primary School has a lift facility making all areas of the schools accessible to those with restricted mobility. Not all areas of Stornoway primary School are accessible to those with restricted mobility.

Extra curricular activities

- 7.6 At both schools there are a range of extra-curricular activities. In addition, both schools have a "wrap around care" facility between the end of the school day and 5.30pm.

Capacity

- 7.7 If the proposal is effected, there is capacity in both schools for the current population and allowing for some growth in future. The pupils of both establishments will link to the same secondary school so that, at the point of transition, there would not be an impact on the rolls of any other secondary school.

Likely Effect on the Local Community

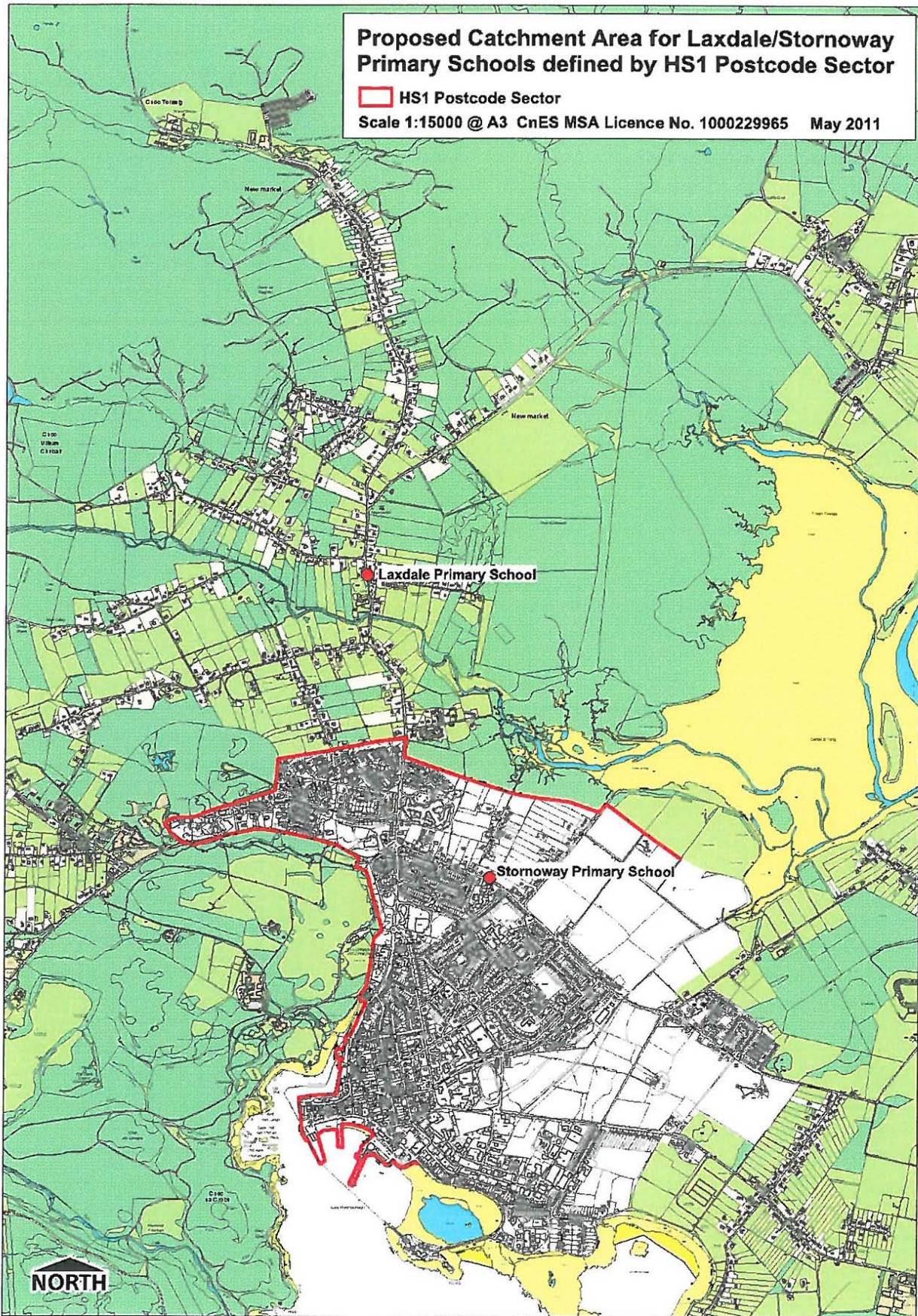
- 7.9 If the proposal is implemented for August 2012 and the order of entry within either school's catchment area required to be determined, the following order of priority will apply:
1. Pupils currently enrolled in either school will remain
 2. those pupils with siblings already attending the school
 3. the order of date by which the parents' application for their child(ren)'s enrolment was received by the school
 4. None of the above would preclude the parents' right to make a placing request if they so wished

Summary of Educational Benefits

- 7.10 Attending either school offers the same educational benefits. Both schools offer:
- many curricular and extra-curricular activities for pupils;
 - flexibility in grouping pupils for learning and teaching;
 - flexibility in the deployment of staff to meet learning needs;
 - opportunities for staff to share effective practice and a wide range of learning and teaching approaches;
 - good opportunities to provide school improvement.

CONCLUSION

- 8.1 Both Laxdale Primary School and Stornoway Primary School offer a high quality education. In order to provide an administrative definition of the catchment area to the north west of Stornoway, it is proposed that the HS1 postcode line, as illustrated in Appendix 1, be used.



CONSULTEES

The consultation will be open to all relevant stakeholders. The groups that will be specifically consulted are:

- Parents of pupils in affected schools
- Pupils in affected schools
- Parents of pre-school children in Croileagan Lacasdal, An Cotan, Stornoway Playgroup, Little Learners, Sandwich Playgroup and Stornoway Primary pre-school provision
- Parent Councils

Staff and pupils will be consulted separately.