



Comhairle nan Eilean Siar
Ag Obair Còmhla Airson nan Eilean

SPACEPORT ONE: CONSTRUCTION ENVIRONMENTAL REPORT

Client	CnES
Project/Proposal No;	P58
Version	V1
Date	31 March 2025

Document information

Project Name:	Spaceport One: Enabling Construction Programme
Document Title:	Construction Environmental Manager Report to Planning
Client Name:	CnES
Author:	Gareth Gentles
Reviewed:	
Approved:	
Date:	31 March 2025
Version:	V1
Project / Proposal Number:	P58

Version No.	Date	Authored	Reviewed	Approved	Notes
0.1	31/03/25	G. Gentles			Draft
0.1	19/05/24		R Winfield		Proofread

DISCLAIMER

This report (including any enclosures, attachments, figures and appendices) has been prepared for the exclusive use and benefit of the addressee(s)/client named above and solely for the purpose for which it is provided. Unless we provide express prior written consent, no part of this report should be reproduced, distributed or communicated to any third party. We do not accept any liability if this report is used for an alternative purpose from which it is intended, nor to any third party in respect of this report.



CONTENTS

1	Outline.....	4
2	Site Comments/Observations.....	4
2.1	Activities.....	4
2.2	General Comments.....	4
2.3	Environmental incidences.....	5
2.4	Compound and infrastructure	5
2.5	Cultural Heritage.....	5
2.6	Otter Species Protection Plan.....	5
2.7	Breeding Bird Protection Plan.....	5
2.8	Waste Management.....	6
3	Visit Photographs.....	6
4	Actions	8
5	Site Plan	9

1 Outline

Visit	Details
Start Date/Time	01/03/2025
Completed Date/Time	31/03/2025
Site	Spaceport One
Works	Enabling construction
Weather	Wet, windy and with some dry sunny spells
Temperature	Min 4°C Max 14°C

2 Site Comments/Observations

2.1 Activities

- 2.1.1.1 The project has progressed to its final stages, encompassing the top dressing of road foundations, installation of kerbing at the bell mouth, and the creation of additional parking areas at the site entrance. The causeway work has been completed, including the installation of crash barriers (Photo 1). The fibre infrastructure for this phase has also been finalised (Photo 2). Furthermore, stock fencing has been installed around the perimeter to delineate agricultural areas from Spaceport operational zones. Additional tasks from phase two have been expedited, including foundation work for the launchpad and associated access construction. For detailed site drawings showing the location of the works, refer to Section 5 Site Plan.

2.2 General Comments

- 2.2.1.1 All works have been completed in accordance with planning conditions, the Written Scheme of Investigation (WSI), the Construction Environmental Management Plan (CEMP), environmental legislation and construction industry best practice.
- 2.2.1.2 Noise, vibration, and dust are being minimized through construction best practices and the site complies with the Construction Traffic Management Plan. For health and safety reasons, in line with HSG151 Protecting the Public¹, access remains restricted to the general public and will be reopened once safe access is possible.
- 2.2.1.3 Asbestos fragments are repeatedly found in the areas around the farm buildings. Wind erosion of sand seems to be a significant contributing factor (Photo 3). All identified asbestos containing materials have been removed and disposed of as special waste.
- 2.2.1.4 Regular inspections have confirmed that water runoff and silt mitigation measures are functioning effectively and settlement ponds to the front of the silt mitigation measures are starting to revegetate (Photo 4).

¹ <https://www.hse.gov.uk/pubns/books/hsg151.htm>

- 2.2.1.5 The exit culvert from Loch Scolpaig to the sea (NF 72646 75144) was previously blocked by storm debris, leading to elevated water levels in the loch. Site contractors have since removed the debris, resulting in a decrease in water levels (Photo 5). Any future modifications or replacements of the culvert will require full consultation with SEPA, including the disclosure of the recently discovered migratory European eel (*Anguilla anguilla*) population in the loch. The International Union for Conservation of Nature (IUCN) now classifies this species as critically endangered.
- 2.2.1.6 Site personnel have received a series of toolbox talks with subject matter ranging from Archaeology, Water Pollution Prevention (fuel and oil), Stripping Sub Soils (management and planning), Water Pollution Prevention (silt) and Ecological Constraints (otter). Toolbox talks to cover ornithological constraints will be delivered ahead of the breeding bird season.

2.3 Environmental incidences

- 2.3.1.1 Nothing to report.

2.4 Compound and infrastructure

- 2.4.1.1 The site compound is powered by a diesel generator situated within a bunded area, equipped with plant nappies and spill kits. All fuel bowzers are double-bunded and placed on plant nappies. Additional plant nappies are available to facilitate the refuelling of plant and machinery as needed, with spares stored on site. The inspection of storage facilities, including bunded COSHH stores, was satisfactory, adhering to best practices. Site welfare facilities are serviced via a foul waste tank.

2.5 Cultural Heritage

- 2.5.1.1 The planned archaeological work for the enabling works construction phase has now concluded, with all identified cultural heritage features protected by heras fencing. All site personnel have been briefed with a toolbox talk and will notify the Construction Environmental Manager of any additional areas of interest.

2.6 Otter Species Protection Plan

- 2.6.1.1 Preconstruction otter surveys have been conducted, and mitigation measures have been incorporated into an Otter Species Protection Plan. General ecological construction mitigation measures are included in the Construction Environmental Management Plan and have been implemented on site. Speed limit signs of 10 mph have been installed on the access road for construction traffic. A site-specific ecological toolbox talk (focused on otters) was delivered to site personnel prior to construction.
- 2.6.1.2 Otter activity has been detected near the settlement pond (NF 73250 75060), with tracks leading towards upper Loch Scolpaig (Photo 6).

2.7 Breeding Bird Protection Plan

- 2.7.1.1 Construction activities are currently outwith the breeding bird season. Preconstruction breeding bird surveys will be conducted according to seasonal requirements, with specific mitigation measures implemented as part of the Corncrake Habitat Management Plan. Site personnel will receive a toolbox talk on ornithological constraints before the breeding bird season begins.

2.8 Waste Management

- 2.8.1.1 MacAulay Askernish Ltd is ensuring all waste is removed from the site in accordance with their waste carrier's licence. There are no skips currently on site. Asbestos waste notes have been received for the preconstruction removal works at Byre number 3 and for areas with identified debris within the farm complex, as recorded in the Asbestos Refurbishment and Demolition report published within the CEMP.

3 Visit Photographs

Photo 1 Crash barriers to causeway



Photo 2 Fibre infrastructure



Photo 3 Asbestos debris



Photo 4 Silt mitigation measures



Photo 5 Exit culvert to balance loch water levels

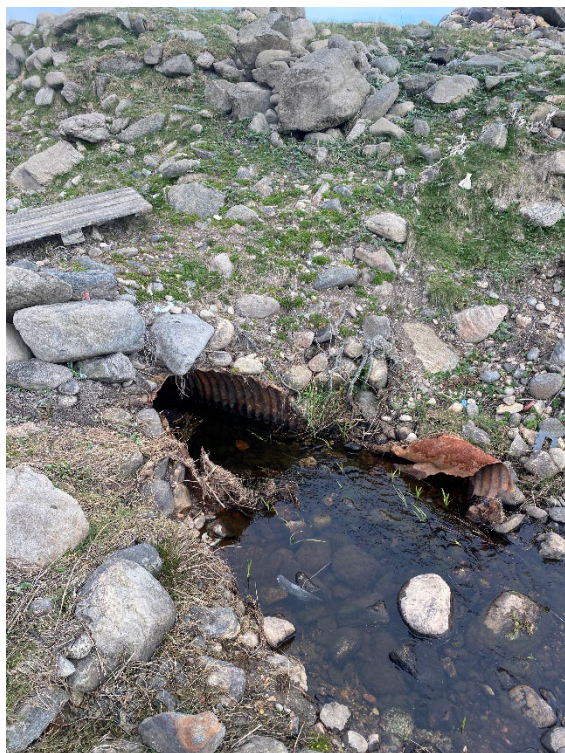


Photo 6 Otter tracks in settlement pond



4 Actions

Non-Conformance	Corrective Action
The site team has swiftly and professionally resolved any identified issues.	N/A

[illegible]



Atlantic58 Ltd

The Old Weaving Shed
UHI North, West and Hebrides
Stornoway
HS2 0XR
01851 827310
office@atlantic58.co.uk
www.atlantic58.co.uk

Company Number: SC594983
VAT Number: 320179433