

# Notice to Mariners

## Vessels and General Safety Advice

### Scottish Hydro Electric Power Distribution (SHEPD)

### ED2 Cable Installation Works: Southern Loch Linnhe, Loch A' Choire – Kilmalieu

### Update to operational dates and additional support boat for CLV and Dive Support

**Date of Issue: 25<sup>th</sup> July 2025**

Please be advised that Briggs Marine Contractors (on behalf of SHEPD) will be installing two new subsea cables between Southern Loch Linnhe, Loch A'Choire - Kilmalieu. Please refer to Figure 1, that shows the location of the planned works. Please also refer to Table 2 overleaf that lists the coordinates for the area.

Mobilisation ahead of subsea cable installation operations, shore end plant and equipment has been complete to the southern landfall via landing craft. Shore end teams are utilising 'Shore Worker 1' (or similar craft) for transiting between Northern and Southern landfalls during operations. Pre-installation activities have also now been complete across the cable installation route.

The cable installation will take place with the Blue Sky and will be assisted with support boats, regularly passing inside the working corridor for crew transfers and supporting nearshore cable landing operations.

Split pipe protection will be installed by divers, followed by rock bag installation and then both subsea cables will then be trenched.

Please refer to Table 1 that lists scope of work, estimated date range and the relevant vessels that will be utilised. As work progresses, further updates will be provided.

|                        | Estimated date range                                 | Relevant vessels  |
|------------------------|--|---|
| Shore demobilisation   | TBC  | TBC   |
| Shore end team transit | 24 <sup>th</sup> July – 29 <sup>th</sup> August      | Shore Worker 1  |
| Cable installation     | 25 <sup>th</sup> July – 18 <sup>th</sup> August      | Blue Sky, Morag M, Celtic Guardian, Celtic Mara, Celtic Nomad, Celtic Trader and Venture West |
| Split pipe protection  | 7 <sup>th</sup> August – 3 <sup>rd</sup> September   | Morag M and Venture West  |
| Rock bag installation  | 6 <sup>th</sup> – 12 <sup>th</sup> September         | TBC   |
| Trenching              | 12 <sup>th</sup> September – 2 <sup>nd</sup> October | TBC   |

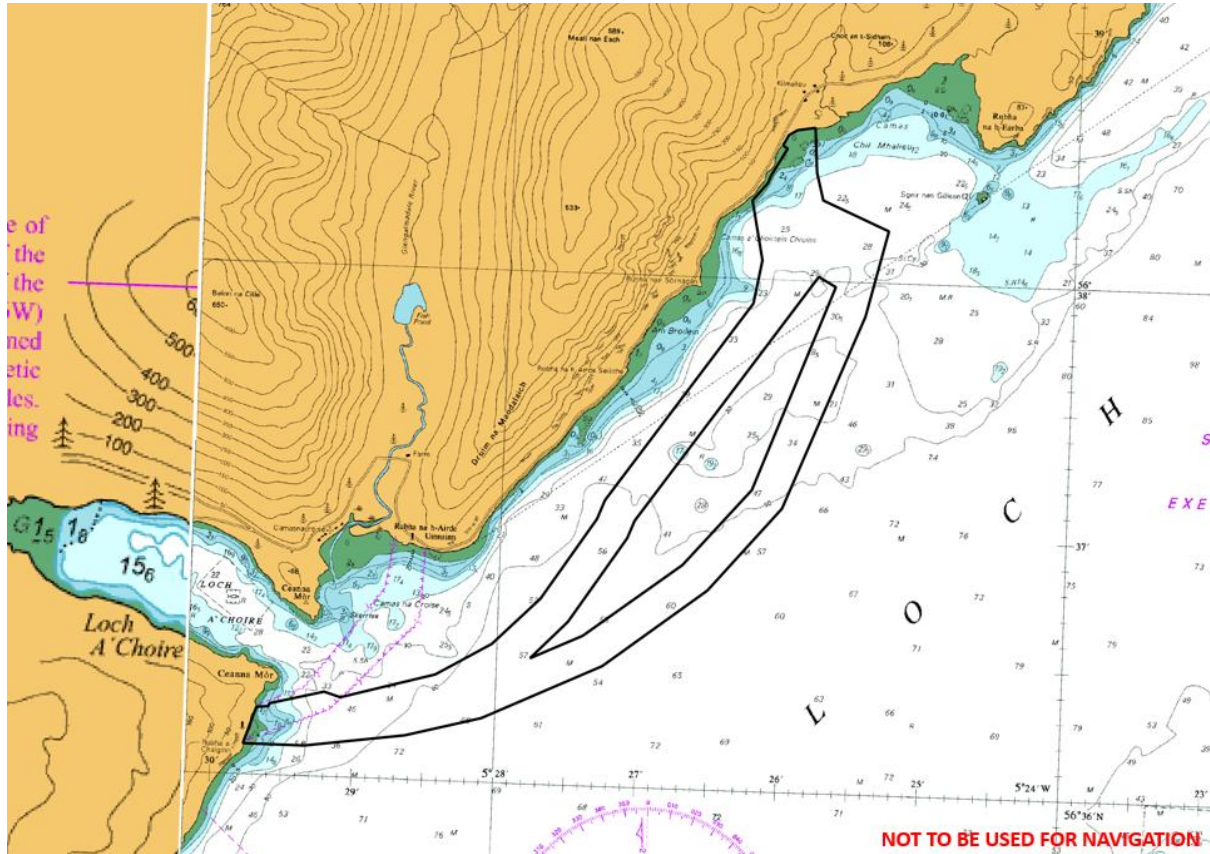
**Table 1 - Scope of work, estimated date range and vessels**

### Legal Notice

Please be advised that this Notice to Mariners should be treated as official notice of the nature, duration and location of the works which are scheduled to take place. During the period of this notice, we request that you plan your activities around our short-term, temporary activities.

Any failure to remove equipment or entry into the identified location in a manner that would constitute a hazard may be a breach of your duties of safe seamanship as described in the Convention on International Regulations for Preventing Collisions at Sea 1972 and/or the Merchant Shipping Act 1995, and may result in removal of the relevant equipment. Failure to remove equipment or entry into the identified location in a manner that would constitute a hazard may constitute a breach of duty of care at common law, and a failure to protect submarine cables for successful seabed user co-existence under Scotland's National Marine Plan.

**SHEPD shall found on this notice in the event of any damage, loss or disruption arising from failure to heed the information herein.**







**Figure 1 - Admiralty chart showing installation area with the installation corridor marked out**





| Latitude (DDM) WGS84 | Longitude (DDM) WGS84 |
|----------------------|-----------------------|
| 56° 20.503' N        | 06° 21.515' W         |
| 56° 20.467' N        | 06° 21.469' W         |
| 56° 20.456' N        | 06° 21.465' W         |
| 56° 20.432' N        | 06° 21.495' W         |
| 56° 20.543' N        | 06° 21.848' W         |
| 56° 20.543' N        | 06° 21.848' W         |
| 56° 20.563' N        | 06° 21.913' W         |
| 56° 20.603' N        | 06° 22.054' W         |
| 56° 20.612' N        | 06° 22.264' W         |
| 56° 20.584' N        | 06° 22.742' W         |
| 56° 20.516' N        | 06° 22.966' W         |
| 56° 20.493' N        | 06° 23.076' W         |
| 56° 20.507' N        | 06° 23.123' W         |

|               |               |
|---------------|---------------|
| 56° 20.542' N | 06° 23.115' W |
| 56° 20.635' N | 06° 22.836' W |
| 56° 20.666' N | 06° 22.461' W |
| 56° 20.666' N | 06° 22.261' W |
| 56° 20.656' N | 06° 22.035' W |
| 56° 20.647' N | 06° 21.985' W |
| 56° 20.503' N | 06° 21.515' W |

**Table 2 – Installation corridor boundary**

|   |  |
|---|--|
|    | <p><b>DSV</b><br/><b>Morag M</b></p> <ul style="list-style-type: none"> <li>- 21.6m LOA</li> <li>- 9 m beam</li> <li>- 2.4 m Draft</li> </ul> <p>MMSI: 235074938<br/>Callsign: 2CQO5</p>                 |
|   | <p><b>DSV</b><br/><b>Venture West</b></p> <ul style="list-style-type: none"> <li>- 12 m LOA</li> <li>- 4 m beam</li> <li>- 1 m Draft</li> </ul> <p>MMSI: 235102915<br/>Callsign: 2HED8</p>               |
|  | <p><b>Cable Lay Vessel</b><br/><b>Blue Sky</b></p> <ul style="list-style-type: none"> <li>- 92.36m LOA</li> <li>- 24m beam</li> <li>- 3.5m Draft</li> </ul> <p>MMSI: 511100803<br/>Callsign: T8A4015</p> |
|  | <p><b>Support</b></p> <p>Celtic Guardian</p> <ul style="list-style-type: none"> <li>- 14m length</li> <li>- 4.3m beam</li> <li>- 0.7m draft</li> </ul>   |



|   |   |
|---|---|
|    | <p><b>Support</b></p> <p>Celtic Trader</p> <ul style="list-style-type: none"> <li>- 10.3m length</li> <li>- 3.3m beam</li> <li>- 0.5m draft</li> </ul>  |
|    | <p><b>Support</b></p> <p>Celtic Mara</p> <ul style="list-style-type: none"> <li>- 11m length</li> <li>- 3.4m beam</li> <li>- 0.5m draft</li> </ul>  |
|   | <p><b>Support</b></p> <p>Celtic Nomad</p> <ul style="list-style-type: none"> <li>-11m length</li> <li>-3.4m beam</li> <li>-0.5m draft</li> </ul>  |
|  | <p><b>Landing Craft</b></p> <p><b>Flo West</b></p> <ul style="list-style-type: none"> <li>- 10.2 m LOA</li> <li>- 3.2 m beam</li> <li>- 0.5 m Draft</li> </ul> <p>MMSI: 232060537<br/>Callsign: MRX14</p> |

**Figure 2 - Vessel Specification**

## Work Description

During operations the vessels Blue Sky, Morag M, Rock bag and Trenching vessel will be restricted in their ability to manoeuvre. Whilst operations will seek to minimise disruption on the width of the main

navigation channel, some disruption may be unavoidable during operations within the working corridor.

Operations will be conducted over 24 hours and are weather/tide dependent.

Should any vessel wish to come within 500m of the vessels, then direct communication with the Master / Operator is required. Vessels will display the appropriate lights/day shapes for their operations.

#### Primary Equipment for Cable-Lay Activities

| Activity              | Equipment  | Vessel   |
|-----------------------|--|----------|
| Landing Craft         | Vessel crane                                       | TBC      |
| Cable lay Activities  | Cable lay/ROV/Survey spread                        | Blue Sky |
| Rock Bag Installation | Rock Bag/ Survey spread/ vessel crane              | TBC      |
| Trenching             | Trenching equipment/ROV/Survey spread/vessel crane | TBC      |

#### Contact Details

The contact details are given in the tables below:

| Site contact:                             |  |
|---|--|
| Briggs Marine Contractors Project Manager | Anna Bladon  |
| Email                                     | <a href="mailto:abladon@briggsmarine.com">abladon@briggsmarine.com</a> |
| Tel                                       | 07795 007 512  |

#### Fisheries Liaison Officers

Fisheries liaison will be co-ordinated by Brown and May Marine (BMM). For any commercial fishery queries please contact the Company Fisheries Liaison Officer (CFLO's) Alex Winrow-Giffin on 07760 160039, [alex@brownmay.com](mailto:alex@brownmay.com) or Meg Kalafat on 07702 710176, [meg.kalafat@brownmay.com](mailto:meg.kalafat@brownmay.com) The local Fishing Industries Representative (FIR) George White (07761 87396), [georgewhite0@gmail.com](mailto:georgewhite0@gmail.com) will also be in place to liaise with the vessels and fishing operations in the area.

#### Further Details

Further enquiries should be addressed to the following people:

| Name                                     | Contact Number | Email  |
|--|----------------|--|
| Finlay MacQuarrie – SSEN Project Manager | 0787 938 7839  | <a href="mailto:Finlay.macquarrie@sse.com">Finlay.macquarrie@sse.com</a> |

#### Distribution List

Any stakeholders identified within the West Highland Fishing Liaison Management Action Plan (FLMAP), will be included on the distribution list for this NtM.