

Notice to Mariners

Vessels and General Safety Advice

Scottish Hydro Electric Power Distribution (SHEPD)

ED2 Cable Installation Works: Southern Loch Linnhe, Loch A' Choire – Kilmalieu

Updated notice to reflect change of corridor and Guard Vessel in operation.

Date of Issue: 22nd August 2025

Please be advised that Briggs Marine Contractors (on behalf of SHEPD) have installed two new subsea cables between Southern Loch Linnhe, Loch A' Choire - Kilmalieu. Please refer to Figure 1, that shows the location of the planned works. Please also refer to Table 2 overleaf that lists the coordinates for the area.

Mobilisation ahead of subsea cable installation operations, shore end plant and equipment has been complete to the southern landfall via landing craft. Shore end teams are utilising 'Shore Worker 1' (or similar craft) for transiting between Northern and Southern landfalls during operations.

Pre-installation activities have also now been complete across the cable installation route.

The cable installation has been completed with the Blue Sky and was assisted with support boats, regularly passing inside the working corridor for crew transfers and supporting nearshore cable landing operations.

Split pipe protection will be installed by divers, followed by rock bag installation. **Two cables are on the seabed surface unprotected pending trenching operations due to commence mid-September.** Guard vessel Spes Bonas will be on site from the 22nd August until trenching operations commence.

Please refer to Table 1 that lists scope of work, estimated date range and the relevant vessels that will be utilised. As work progresses, further updates will be provided.

	Estimated date range	Relevant vessels
Shore demobilisation	TBC	TBC
Shore end team transit	24 th July – 29 th August	Shore Worker 1
Split pipe protection	7 th August – 3 rd September	Morag M and Venture West
Rock bag installation	6 th – 12 th September	TBC
Trenching	12 th September – 2 nd October	TBC

Table 1 - Scope of work, estimated date range and vessels

Legal Notice

Please be advised that this Notice to Mariners should be treated as official notice of the nature, duration and location of the works which are scheduled to take place. During the period of this notice, we request that you plan your activities around our short-term, temporary activities.

Any failure to remove equipment or entry into the identified location in a manner that would constitute a hazard may be a breach of your duties of safe seamanship as described in the Convention on International Regulations for Preventing Collisions at Sea 1972 and/or the Merchant Shipping Act

1995, and may result in removal of the relevant equipment. Failure to remove equipment or entry into the identified location in a manner that would constitute a hazard may constitute a breach of duty of care at common law, and a failure to protect submarine cables for successful seabed user co-existence under Scotland's National Marine Plan.

SHEPD shall found on this notice in the event of any damage, loss or disruption arising from failure to heed the information herein.

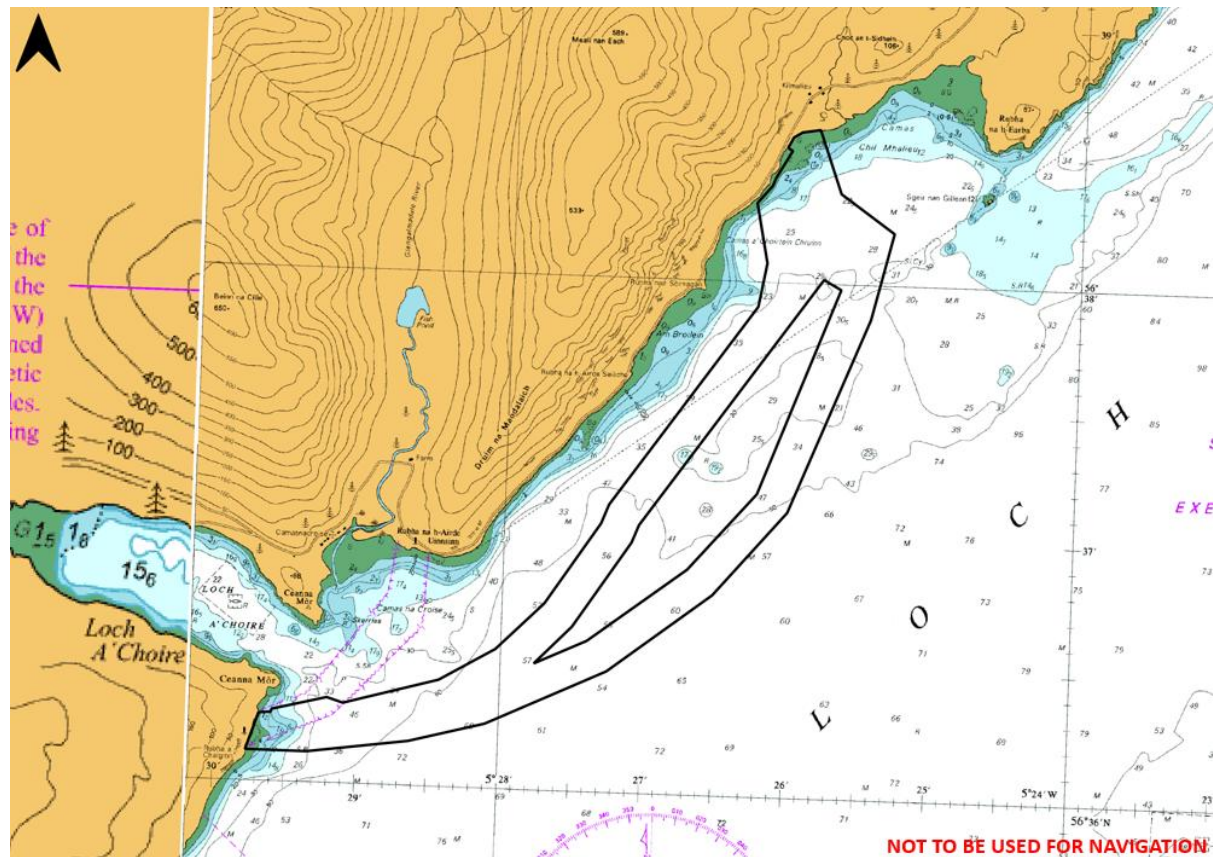




Figure 1 - Admiralty chart showing installation area with the installation corridor marked out

Latitude (DDM) WGS84	Longitude (DDM) WGS84
56° 38.203' N	005° 25.333' W
56° 37.866' N	005° 25.478' W
56° 37.108' N	005° 26.021' W
56° 36.778' N	005° 26.528' W
56° 36.469' N	005° 27.253' W
56° 36.250' N	005° 28.095' W
56° 36.172' N	005° 28.631' W
56° 36.118' N	005° 29.342' W
56° 36.119' N	005° 29.774' W
56° 36.263' N	005° 29.687' W
56° 36.266' N	005° 29.604' W
56° 36.278' N	005° 29.596' W
56° 36.331' N	005° 29.213' W
56° 36.312' N	005° 29.097' W
56° 36.414' N	005° 28.431' W
56° 36.540' N	005° 28.039' W

56° 36.724' N	005° 27.706' W
56° 37.042' N	005° 27.327' W
56° 37.116' N	005° 27.275' W
56° 37.903' N	005° 26.275' W
56° 38.073' N	005° 26.221' W
56° 38.305' N	005° 26.306' W
56° 38.373' N	005° 26.203' W
56° 38.405' N	005° 26.180' W
56° 38.512' N	005° 26.070' W
56° 38.519' N	005° 26.095' W
56° 38.527' N	005° 26.103' W
56° 38.533' N	005° 26.094' W
56° 38.564' N	005° 26.066' W
56° 38.585' N	005° 26.005' W
56° 38.596' N	005° 25.878' W
56° 38.351' N	005° 25.717' W
56° 38.203' N	005° 25.333' W
56° 38.016' N	005° 25.819' W
56° 37.979' N	005° 25.695' W
56° 37.041' N	005° 27.060' W
56° 36.972' N	005° 27.108' W
56° 36.585' N	005° 27.399' W
56° 36.490' N	005° 27.766' W
56° 36.638' N	005° 27.506' W
56° 36.875' N	005° 26.710' W
56° 37.176' N	005° 26.239' W

Table 2 – Installation corridor boundary

	<p>DSV Morag M</p> <ul style="list-style-type: none"> - 21.6m LOA - 9 m beam - 2.4 m Draft <p>MMSI: 235074938 Callsign: 2CQO5</p>
	<p>DSV Venture West</p> <ul style="list-style-type: none"> - 12 m LOA - 4 m beam - 1 m Draft <p>MMSI: 235102915 Callsign: 2HED8</p>


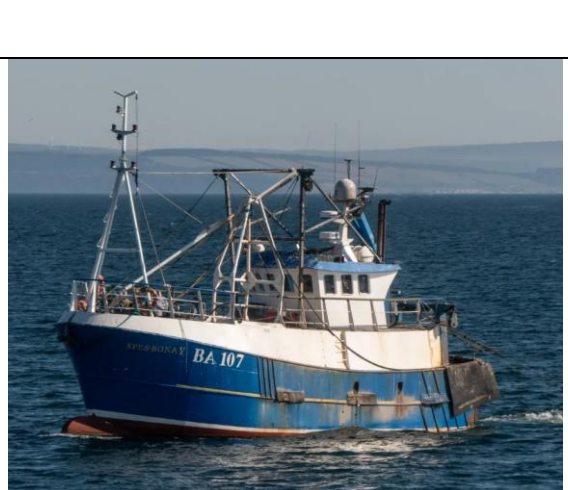
	Landing Craft Flo West <ul style="list-style-type: none"> - 10.2 m LOA - 3.2 m beam - 0.5 m Draft MMSI: 232060537 Callsign: MRX14
	Guard Vessel Spes Bona <ul style="list-style-type: none"> - 15 m LOA - 6 m beam - 3.7 m draft MMSI: 235074945 Callsign: 2CQP4

Figure 2 - Vessel Specification

Work Description

During operations the vessels Morag M, Rock bag and Trenching vessel will be restricted in their ability to manoeuvre. Whilst operations will seek to minimise disruption on the width of the main navigation channel, some disruption may be unavoidable during operations within the working corridor.

Operations will be conducted over 24 hours and are weather/tide dependent.

Should any vessel wish to come within 500m of the vessels, then direct communication with the Master / Operator is required. Vessels will display the appropriate lights/day shapes for their operations.

Primary Equipment for Cable-Lay Activities

Activity	Equipment	Vessel
Landing Craft	Vessel crane	TBC
Rock Bag Installation	Rock Bag/ Survey spread/ vessel crane	TBC
Trenching	Trenching equipment/ROV/Survey spread/vessel crane	TBC

Contact Details

The contact details are given in the tables below:

Site contact:

Briggs Marine Contractors Project Manager	Harry Carmichael
Email	hcarmichael@briggsmarine.com
Tel	+44 7425 788 465

Fisheries Liaison Officers

Fisheries liaison will be co-ordinated by Brown and May Marine (BMM). For any commercial fishery queries please contact the Company Fisheries Liaison Officer (CFLO's) Alex Winrow-Giffin on 07760 160039, alex@brownmay.com or Meg Kalafat on 07702 710176, meg.kalafat@brownmay.com The local Fishing Industries Representative (FIR) George White (07761 87396), georgewhite0@gmail.com will also be in place to liaise with the vessels and fishing operations in the area.

Further Details

Further enquiries should be addressed to the following people:

Name	Contact Number	Email
Finlay MacQuarrie – SSEN Project Manager	0787 938 7839	Finlay.macquarrie@sse.com

Distribution List

Any stakeholders identified within the West Highland Fishing Liaison Management Action Plan (FLMAP), will be included on the distribution list for this NtM.